



新永一®  
**EASYWEIGH**

**FQDDMAN**®  
Food Safety Equipments

**Easyweigh Equipment Co., Ltd**

Tel: +86 760 89963400

Fax: +86 760 85280597

sales@easyweigh-group.com

www.easyweigh-group.com

Floor 3, Building A, 10 Torch Ave, Torch Development Zone,  
Zhongshan, Guangdong, China, 528437

## YGW-LB350F8D

### Conveyor Style Weight Grader



*Suitable for aquatic products like live fishes,lobsters etc.*

### How it works?

Easyweigh' s Weight Graders are designed for grading and packing fish, poultry and meat products targeted foodservice and processing businesses. As the pieces move along the grader, the system' s sturdy arms quickly swivel out and pull each individual piece into the correct chute for its grade.

### Features

- Designed with food and pharmaceutical hygiene standard, gentle plough divert arms are suitable
- for delicate and hard to manage product.
- Sturdy and robust construction easy to maintain, full stainless steel wash down, waterproof IP65
- On board touch screen operating system is easy to use with user password protection, store up
- to 99 product setups. Record up to 1 year production data, exportable to USB FlashDrive with



- optional bluetooth connectivity

## About Machine

Model	YGW-LB350F8D
Power Supply	AC220V±10% 50HZ ( 60HZ )
Rated Power	1.3KW
Checking Range	≤5000g
Accuracy	±2g~±5g
Minimum Scale	1g
Belt Speed	20 ~ 90m/min
Optimal Throughput	120 pcs/min
Suitable Product Dimension	≤400mm(L)*330mm(W)
Weighing Belt Dimension	600mm(L)*340mm(W)
Machine Dimension	9375 ( L ) *1240mm ( W ) *1300mm ( H )
Rejector	Swing Arm
Control Module	High Speed A/D Sampling Module
Product Preset	99
Conveyor Direction	From Left to Right
Compressed Air	0.6-1Mpa
Nozzle Connector Type	Φ10mm



新永一®  
**EASYWEIGH**

**FQDDMAN**®  
Food Safety Equipments

**Easyweigh Equipment Co., Ltd**

Tel: +86 760 89963400

Fax: +86 760 85280597

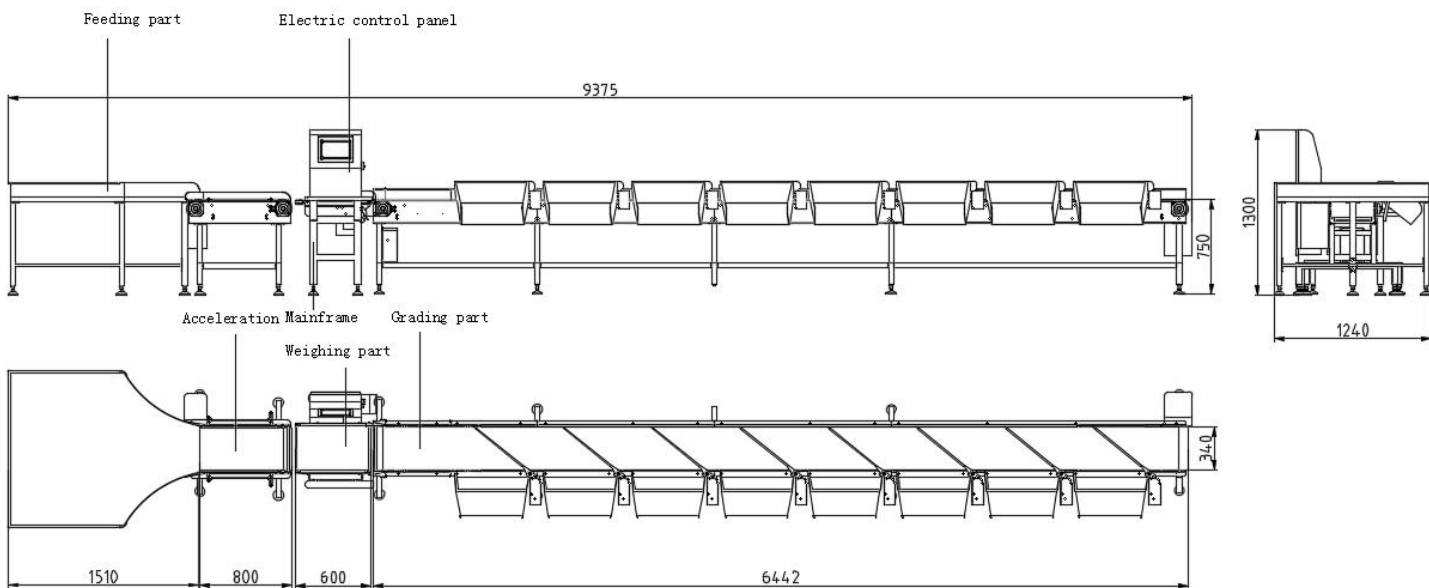
sales@easyweigh-group.com

www.easyweigh-group.com

Floor 3, Building A, 10 Torch Ave, Torch Development Zone,  
Zhongshan, Guangdong, China, 528437

<b>Operating Requirement</b>	Temperature : 0°C ~ 40°C , Humidity : 30% ~ 95%
<b>Machine Body Construction</b>	SUS304 Full Stainless Steel

## About Measurement:



## Main Components:

BRAND	COMPONENT	SPECIFICATION	UNIT/ MACHINE
WEINVIEW	Touch Screen	10 Inch	1
Zhonghang	Load Cell	50KG	1
OMRON	Power Supply	S8JC-Z100 24C 4.5A	1
SUOMO	Main Switch	SLD2(SLD2-32)	1
OMRON	Solid State Relay	G3NA-210B DC5-24V	8
DANFOSS	VFD	220V 1.5KW	1



新永一®  
**EASY WEIGH**

**FQDDMAN**®  
Food Safety Equipments

## Easyweigh Equipment Co., Ltd

Tel: +86 760 89963400

Fax: +86 760 85280597

[sales@easyweigh-group.com](mailto:sales@easyweigh-group.com)

[www.easyweigh-group.com](http://www.easyweigh-group.com)

Floor 3, Building A, 10 Torch Ave, Torch Development Zone,  
Zhongshan, Guangdong, China, 528437

SEW	Motor	220V 120W IP55	1
other	Motor	220V,0.37KW, IP56	1
other	Motor	220V,0.75KW, IP56	1